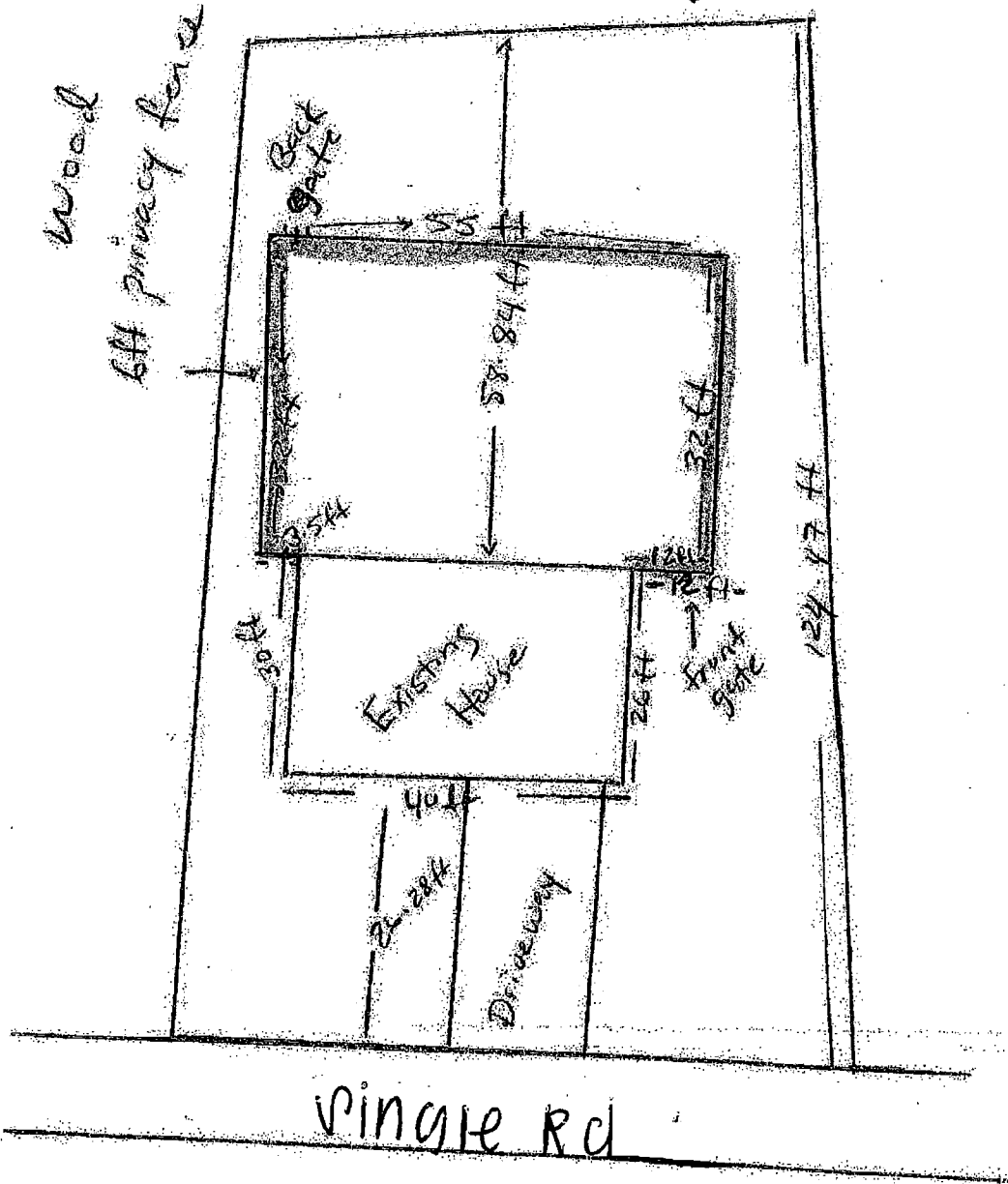
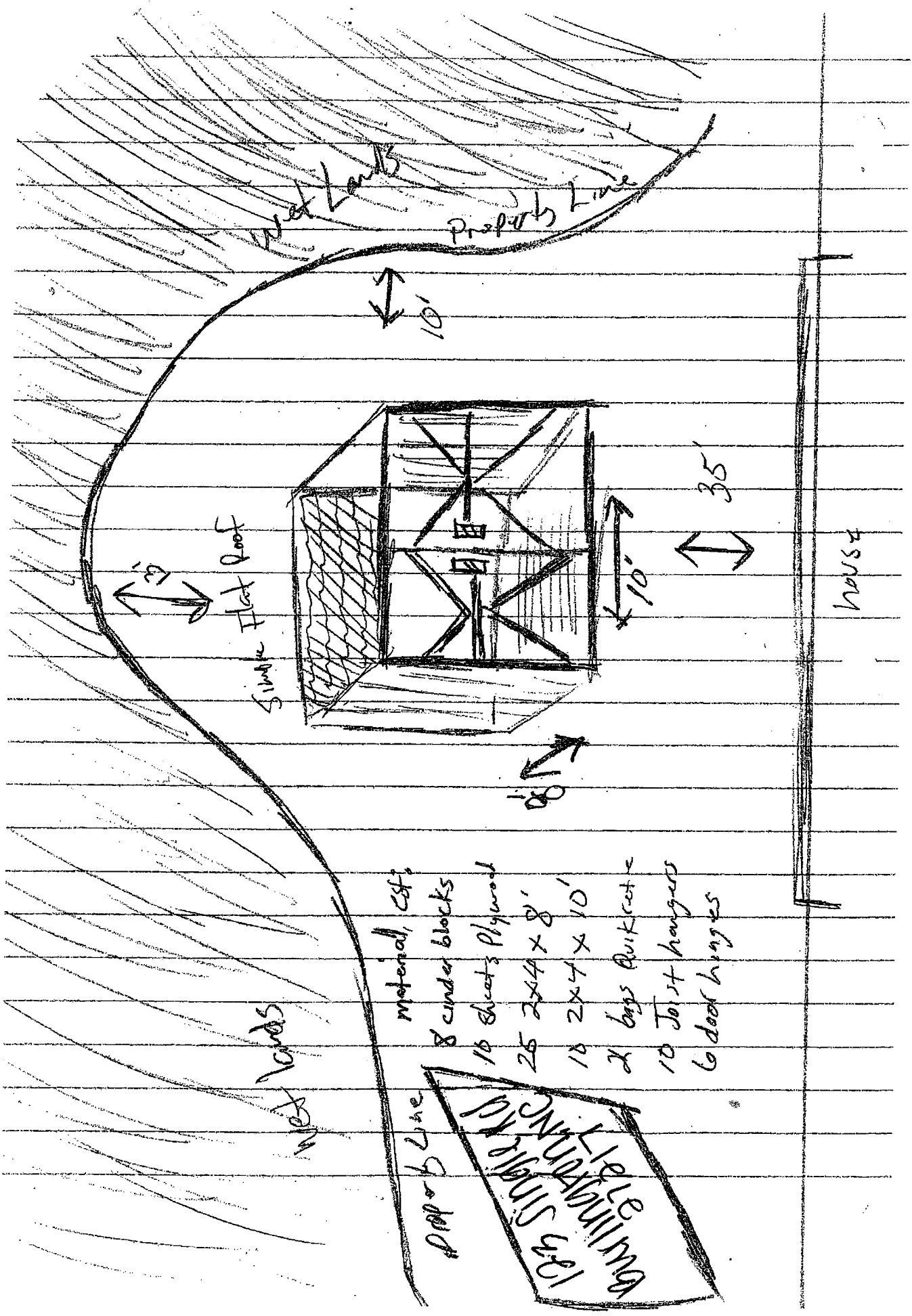


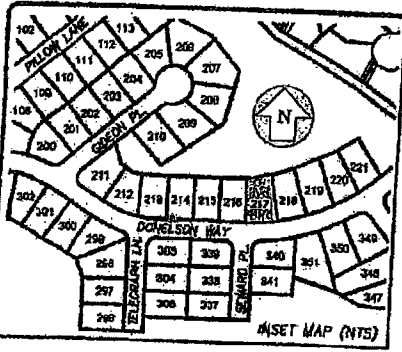
123 Single Rd
Burlington NC 27217



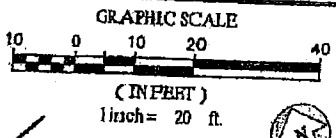
SAMPLE



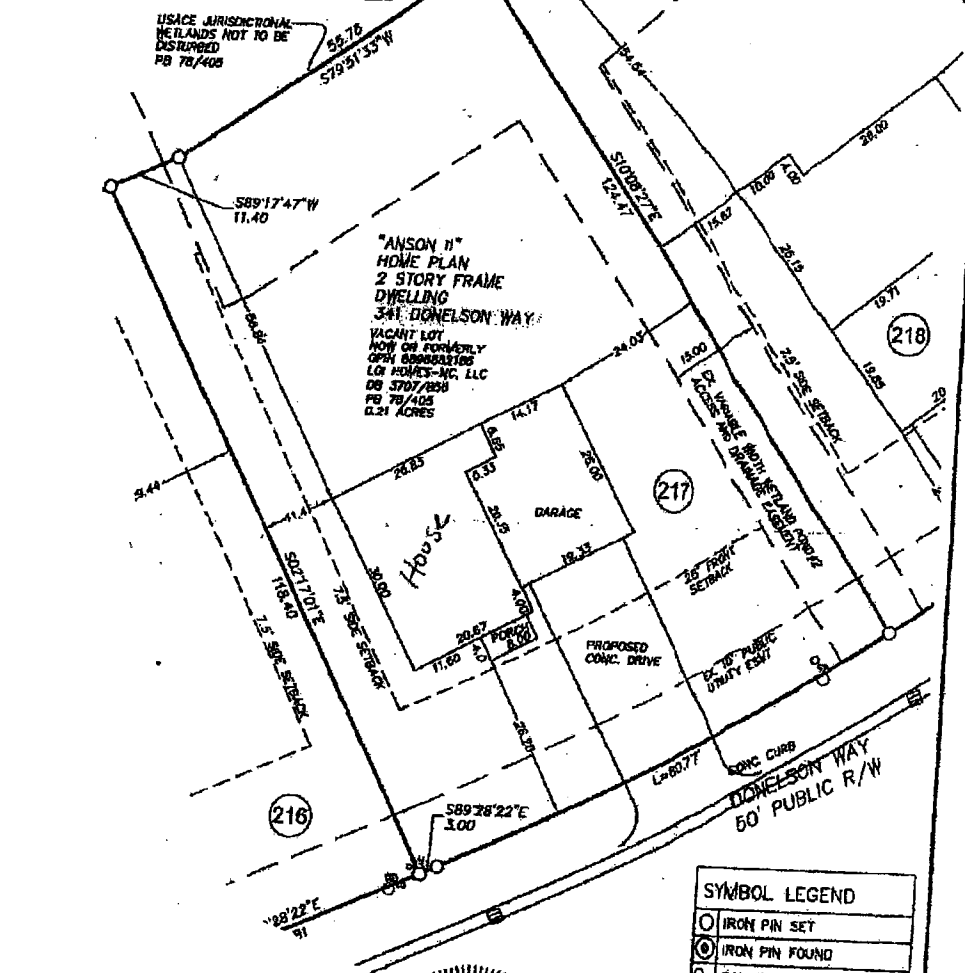
SAMPLE



USACE JURISDICTIONAL
WETLANDS AND WETLAND
STORM POND AREA
NOW ON FORMERLY
OPN 889992186
HWY PROPERTIES LLC
DB 3078/431
PB 77/278



USACE JURISDICTIONAL
WETLANDS NOT TO BE
DESCRIBED
PB 78/406



SAMPLE
PLOT

K2021416-00040000 D:\dwg\140217017\SURV\04-00-09_PlotPlan.dwg, 11/07/2017 2:02:45 PM, hmc, ip: 6304, L1

(○)	IRON PIN SET
(⊙)	IRON PIN FOUND
(○)	SANITARY CLEANOUT
(⊙)	SANITARY SEWER MANHOLE
(○)	CABLE TV RISER
(X)	FIRE HYDRANT
(○)	WATER METER
(○)	WATER VALVE
(⊙)	STORM SEWER MANHOLE
(○)	ELECTRIC METER
(○)	STORM INLET



Bl. Wells 11-7-2017

FOR ADDITIONAL BOUNDARY DATA, DEGS, BEARING BASIS
AND COORDINATES SEE PB 78/406.

PLOT PLAN OF LOT 217 BEDFORD HILLS
PHASE 2B SUBDIVISION FOR
LGI HOMES-NC, LLC
HAW RIVER TYP., ALAMANCE CO., NORTH CAROLINA
PROPERTY DESCRIBED IN DB 3707/855, PB 78/405,
AND STANDING IN THE NAME OF
LGI HOMES-NC, LLC.

SUMMIT
SURVEYING AND ENGINEERING SERVICES
Creatively Inspired Technically Executed
License #: P0039
524 Meadowlands Drive
Hillsborough, NC 27561
Voice: (919) 733-3365 Fax: (919) 733-6674
www.summitdnc.com
Summit Proj. # 14-024010.16-0149